

Lecture Six

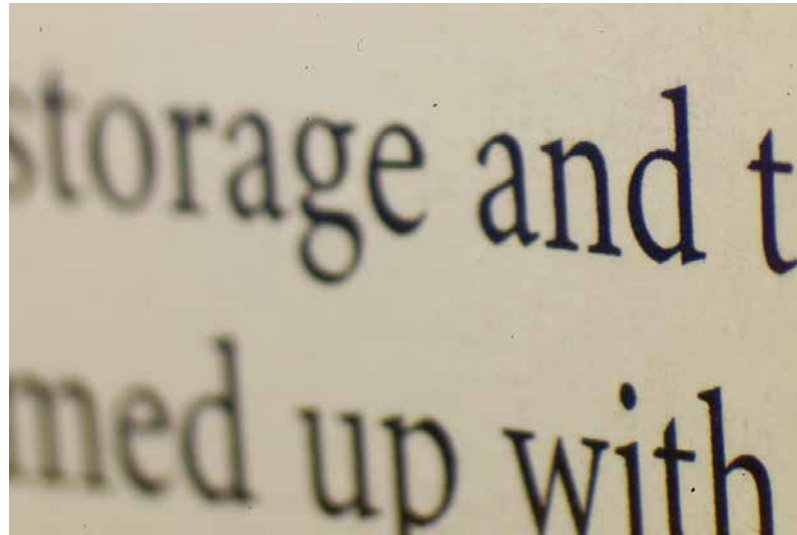
Questions

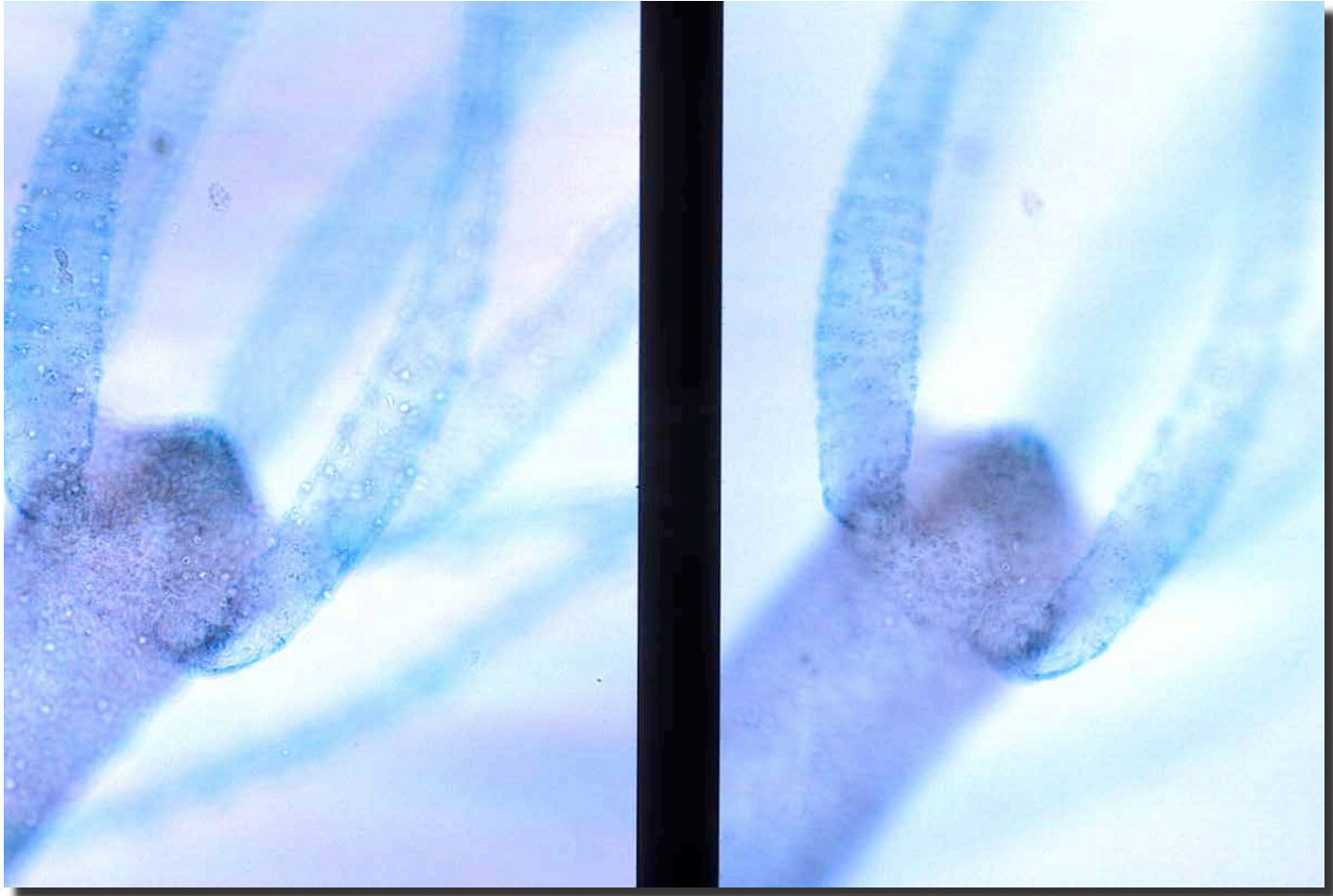
Quiz four

- What four image characteristics does the aperture diaphragm control?
- What does the field stop control?
- What is chromatic aberration? How might you manage this problem?
- What two attributes are used to calculate the NA of an objective?

Depth of Field of your image

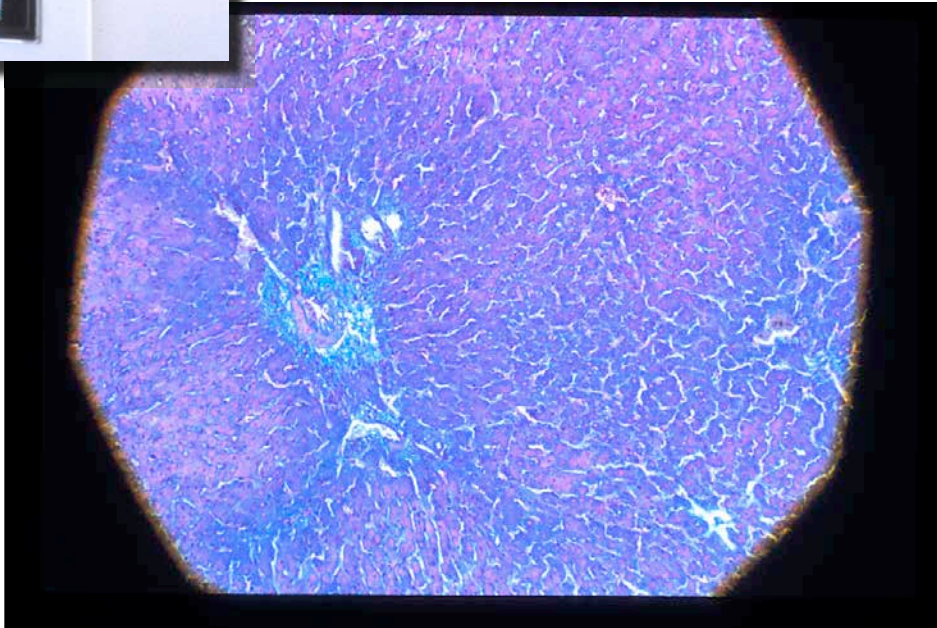
- Influenced by magnification
- Aperture choice





Field diaphragm

Diameter of the
illumination of the beam

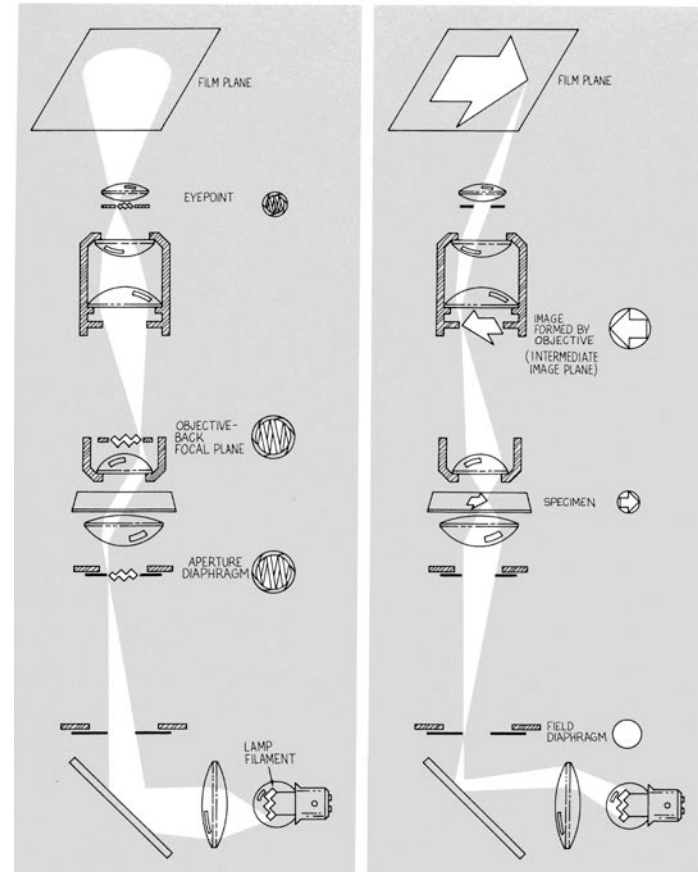


Kohler Illumination



August Kohler
“Kohlering”

- Imaging pathway
- Illumination pathway



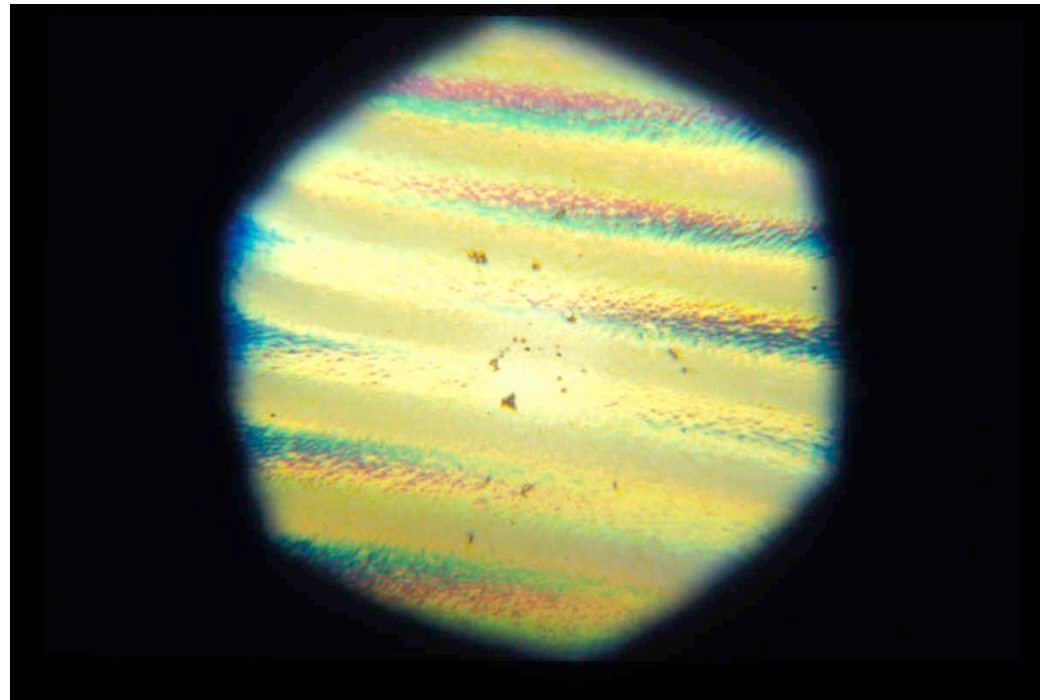
IMAGING pathway

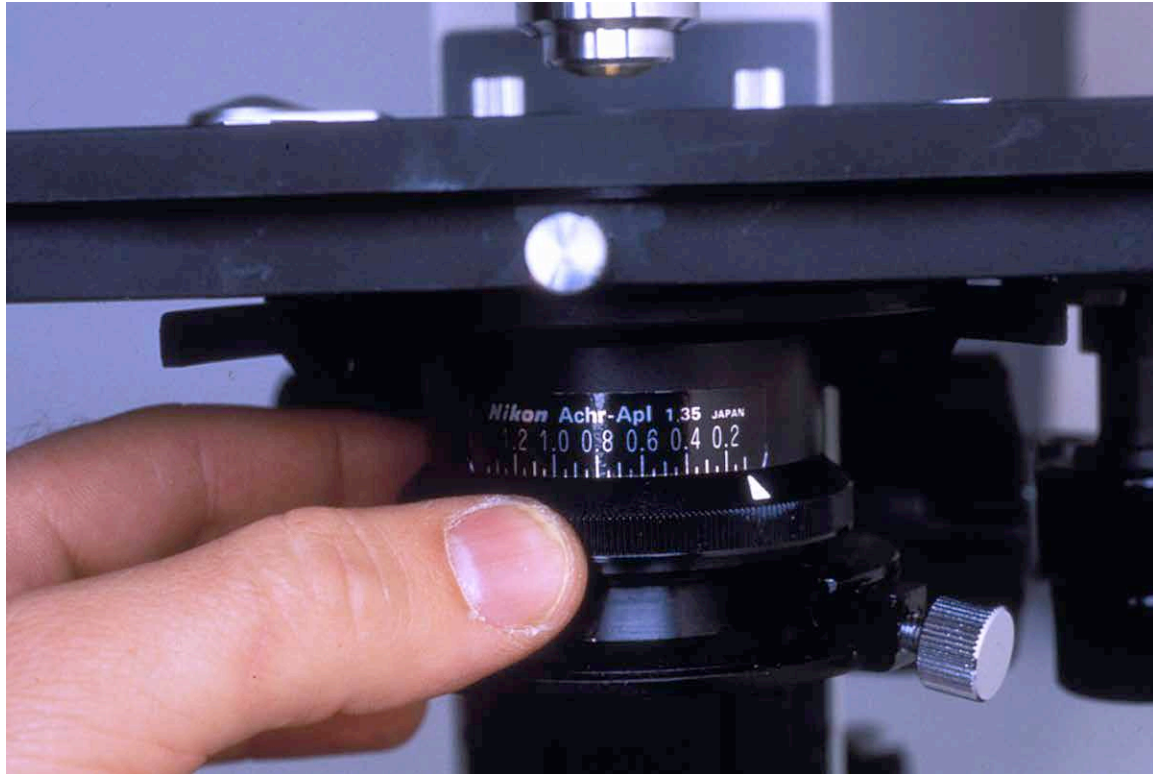
- Film plane
- Intermediate image plane
- Specimen
- Field diaphragm

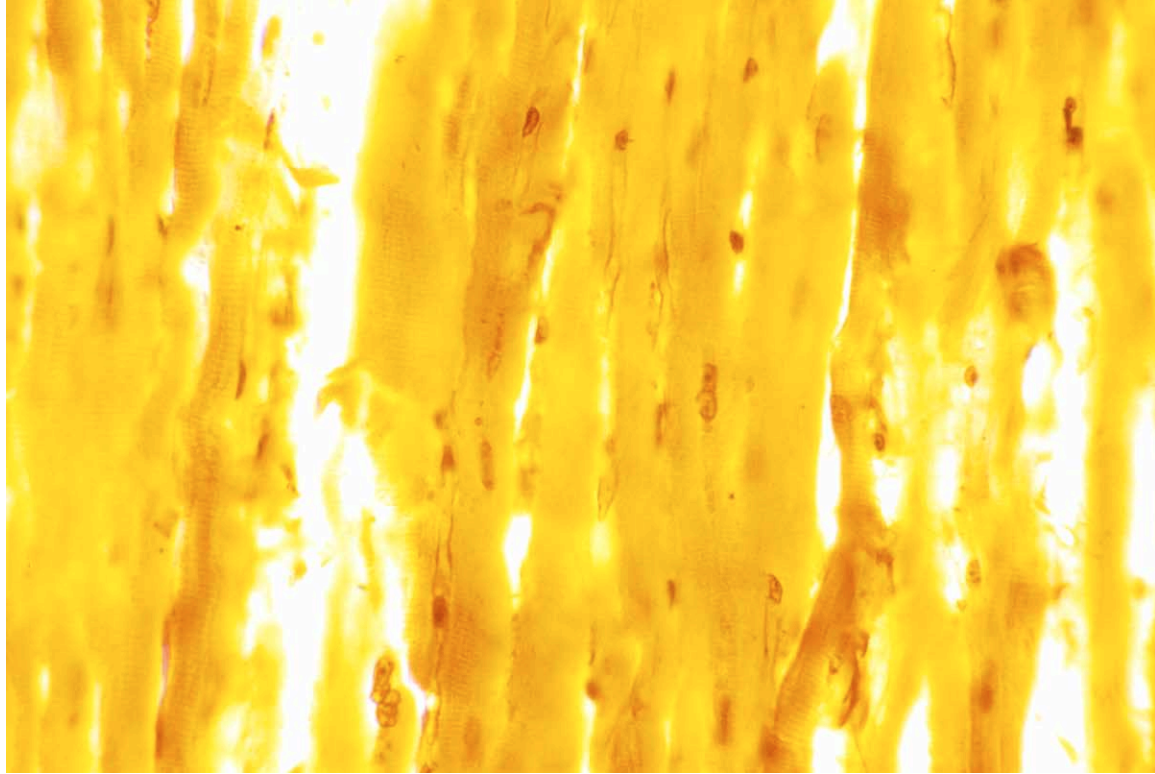
Illumination pathway

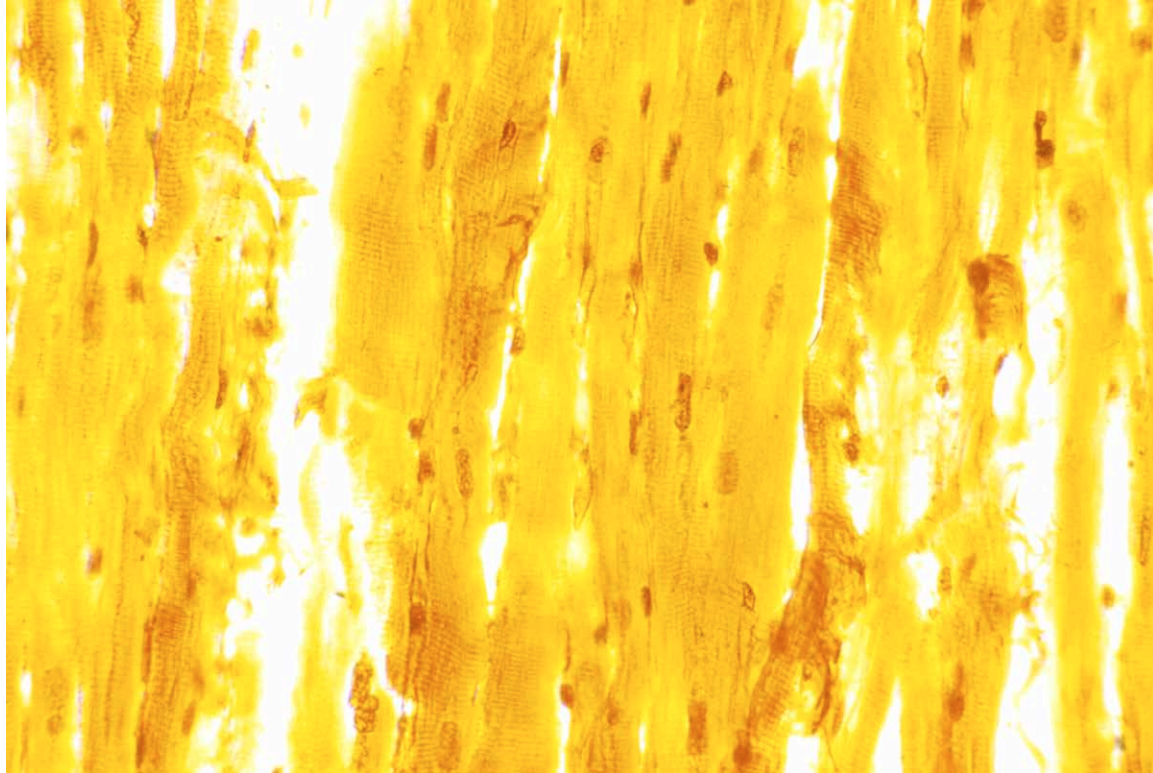
- Filament
- Aperture diaphragm
- Exit pupil of the objective
- Eye point

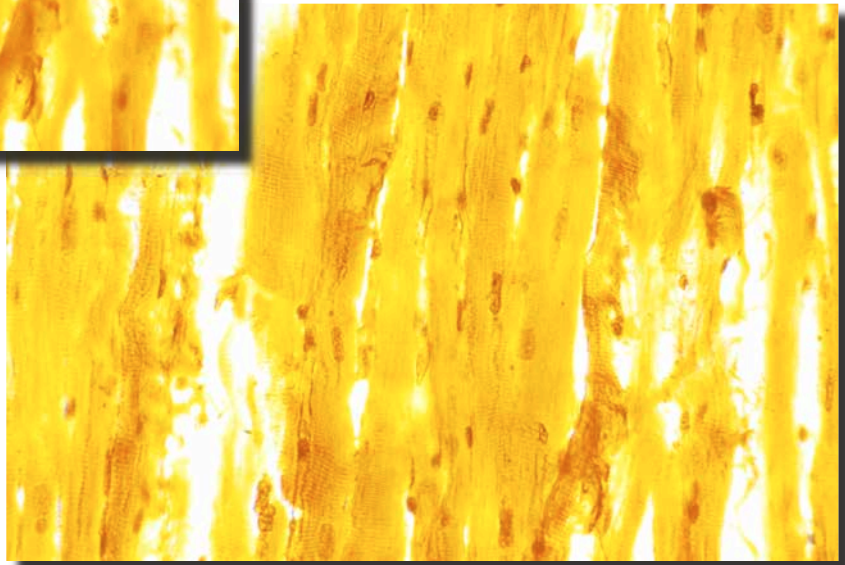
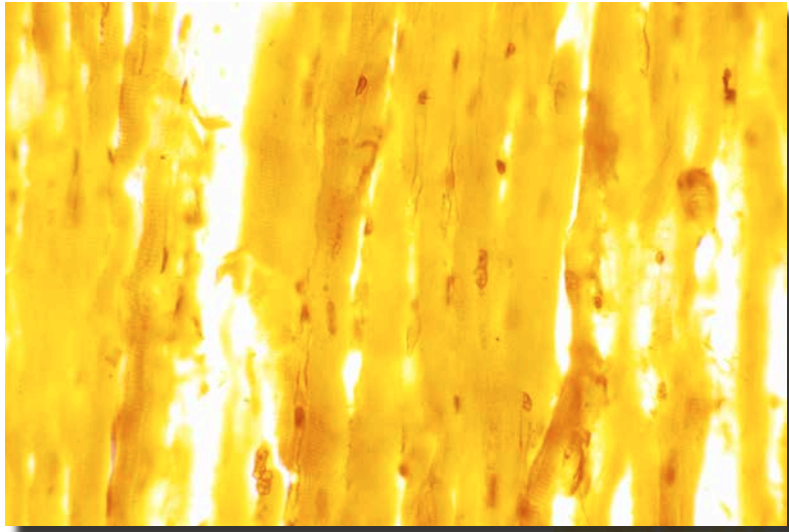
Aperture Diaphragm

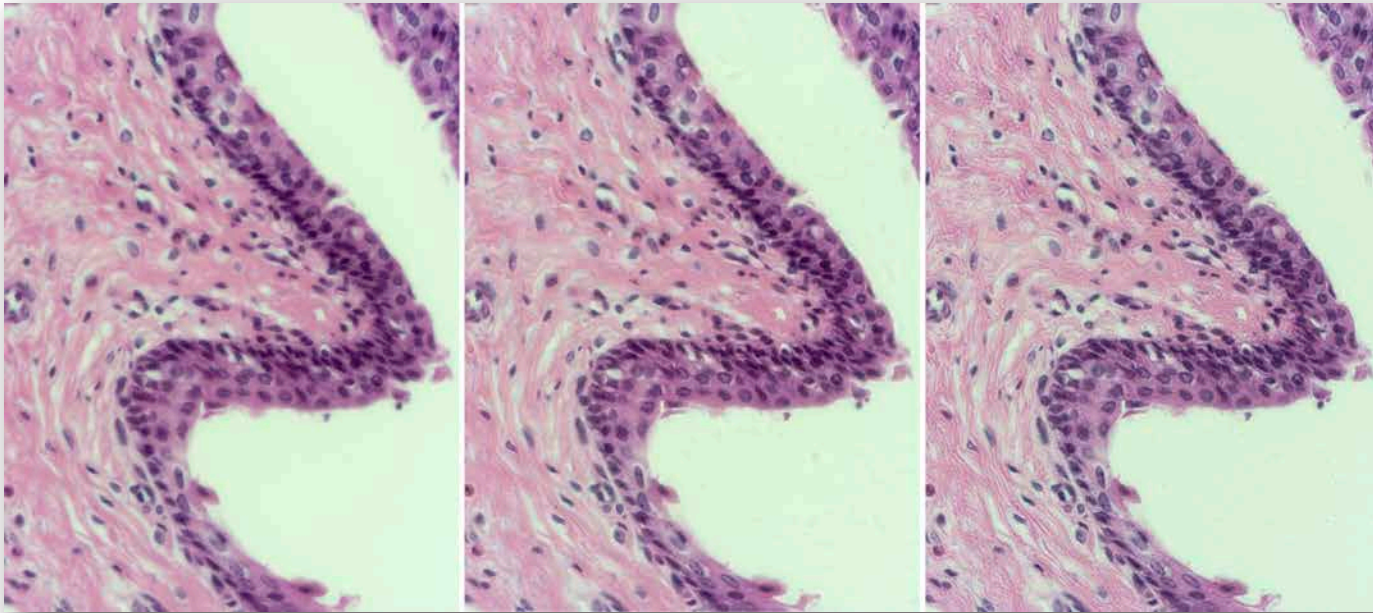












Resolution and Diffraction

